

THE DAILY JOURNAL

Volume 113, Number 271

The McGraw-Hill Companies

Monday, November 21, 2011

Names in the News

David G. Huelskamp has been selected as president of Aurora's Merrick & Co., effective January 3. Huelskamp will report to Ralph W. Christie, Jr., who has been Merrick's chairman, president and CEO for nearly 15 years. As part of this transition, Christie will continue as chairman and CEO.



David G. Huelskamp

As president, Huelskamp will be responsible for operations of the company and several corporate support functions within the organization. He has been with Merrick for more than 15 years and most recently held the role of senior vice president of business development. He holds an engineering degree from the U.S. Air Force Academy and an MBA from Arizona State University.

"Transitioning the president's position to David is very important and timely, considering the significant growth the company has experienced," Christie said. "Merrick's vision over the next several years is to continue to grow the firm's service offerings to clients and expand its geographic footprint."

News Briefs

Alan Ford Architects Selected to Lead Habitat Colorado Design-Build Team

Denver's Alan Ford Architects PC has been selected as the architect-of-record leading a design-build team to create Habitat's Blue Spruce project in Kittredge. Next spring, Blue Spruce Habitat for Humanity will break ground on a duplex for two Colorado families, furthering the Habitat for Humanity of Colorado mission to create simple, decent and affordable housing.

"Keeping the solutions simple and easy to build with volunteer labor was a primary objective. This was important both for affordability and buildability," Alan Ford said. "Given the small square footage of the home, it was critical to keep circulation down and functional efficiency high... and considering that the design had the potential for being repeated, we set out to make the design solution adaptable to different sites."

Joining Ford on the Habitat design-build team are designers Molly Blakley, Kathy Ford and Matt Weaver. They will be awarded a \$5,000 stipend to complete construction documents for the project.

"No matter what the budget of a project is, the approach is always similar—to create high-quality space," Weaver said. "Our goal is to bring in daylight, provide for fresh air and carefully consider the possible uses of each space."

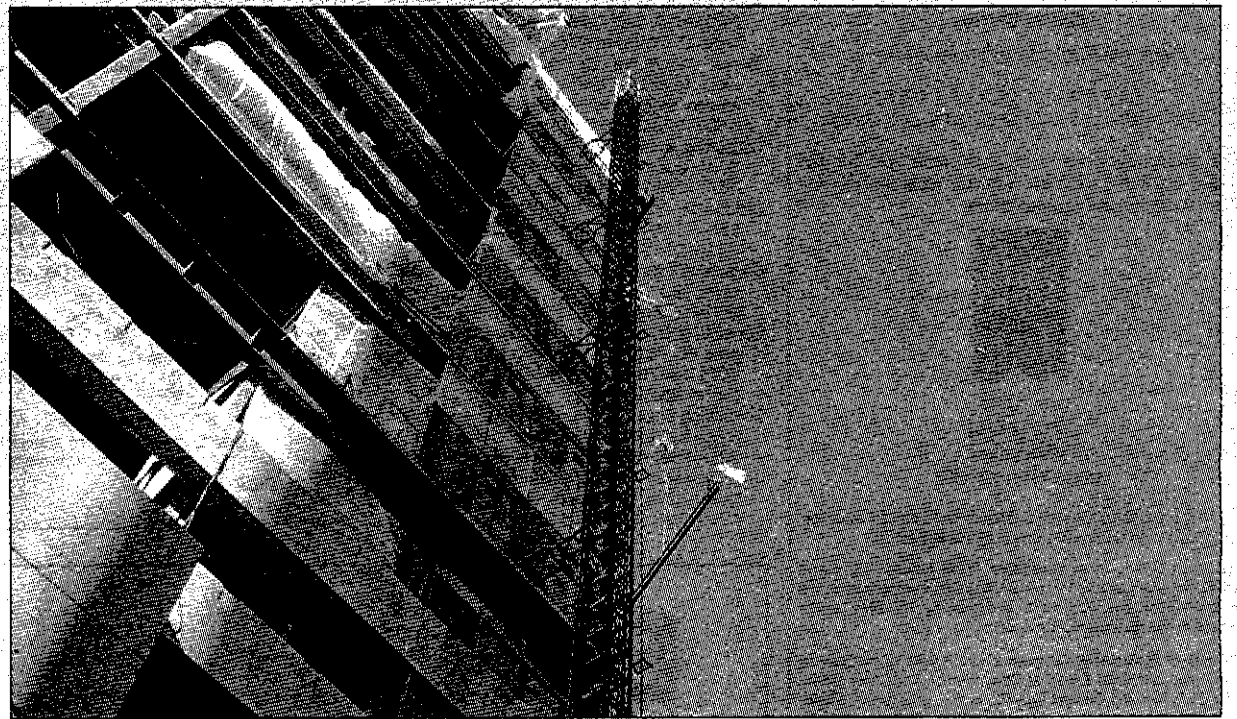
AIA Denver, in partnership with CAD-I Inc., administered the design-build competition for Habitat for Humanity of Colorado. The winning team was selected Nov. 4 by a jury comprised of David Barrett, Stephen Colella, construction manager, Blue Spruce Habitat for Humanity; Kevin Eronimus; Shane Gring; Judy O'Brien, Kathleen O'Leary, executive director, Blue Spruce Habitat for Humanity; and architect Kevin Yoshida.

Blue Spruce Habitat for Humanity and AIA Denver are each fundraising to build one-half of the duplex. EVstudio will donate the engineering (structural, mechanical, civil).

GE Johnson Construction Co. provided cost-estimation services for the winning design, and BCER Engineering provided the energy modeling.

Sponsorship opportunities are available; contact AIA Denver for more information.

Saunders Tops Off New DaVita Headquarters in Denver



The project team for DaVita and Saunders Construction held a topping-off ceremony on Nov. 10 for the new headquarters of the kidney care company. The final steel beam was placed on the north corner of the 256,400-sq-ft, 14-story building in Denver's Central Platte Valley, just west of LoDo. The ceremony celebrated completion of the highest point of the building, which was designed by MOA Architecture.

The completed tower will accommodate almost 1,000 employees and serve as a training site for the company in a program it calls DaVita University. The new headquarters will incorporate several features that promote the company's team-oriented culture. Those include: rooftop exterior terraces, three

two-story interior garden areas, a top level marketplace, community spaces, large employee training area and a student union. In addition, the top floor and the corners will be devoted as general work spaces, not private offices.

"It's appropriate to celebrate the end of this phase of the construction process with our great team, as it's their hard work that has successfully brought us to this point," said Greg Schmidt, president of Saunders Construction.

As of the topping-off ceremony, the project team has used more than 34 million pounds of concrete on the building and installed 17,370 tons of reinforcing steel. DaVita plans to open the new headquarters in summer 2012.

October contracts for future construction in the cities of Denver and Aurora, consisting of Adams, Arapahoe, Clear Creek, Denver, Douglas, Elbert, Gilpin, Jefferson and Park counties

(In thousands of dollars)

	2011	2010	Percent Change
Nonresidential	\$91,428	\$88,746	+3
Residential	\$118,801	\$104,133	+14
Total Building	\$210,229	\$192,879	+9

For the year-to-date on a cumulative basis, the totals are:

	2011	2010	Percent Change
Nonresidential	\$1,524,608	\$1,347,335	+13
Residential	\$1,128,131	\$950,187	+19
Total Building	\$2,652,739	\$2,297,522	+15

• Nonresidential buildings include commercial, manufacturing, educational, religious, administrative, recreational, hotel, dormitory and other buildings.

• Residential buildings include one- and two-family houses and apartments.

To learn more about Dodge Analytics, contact Tracey McKinney at 303-584-6713 or via e-mail at tracey_mckinney@mcgraw-hill.com.

Inside This Issue:

- Construction News2
- Coming Events4
- Prospective Bidders5
- Construction Notices9
- Legal Ads10

RUSH-TIME VALUED NEWSPAPER



Mike Nelson Meteorologist



For the 7-day forecast plus traffic alerts and road delays go to www.thedenverchannel.com.

	Today	Tomorrow	Wednesday	Thursday	Friday
Denver Metro	51/35	52/36	58/40	58/36	49/31
Colorado Springs	51/30	53/31	57/33	61/32	51/28
Alamosa	47/15	46/12	46/14	47/14	45/7
Grand Junction	48/30	48/27	51/31	53/29	46/25
Fort Collins	48/28	51/30	56/34	56/30	47/26
Greeley	49/24	51/26	56/30	56/26	48/21
Pueblo	54/28	57/27	60/32	64/28	56/23

Sponsored by RIO GRANDE • Building Materials Since 1908 • 303-825-2211