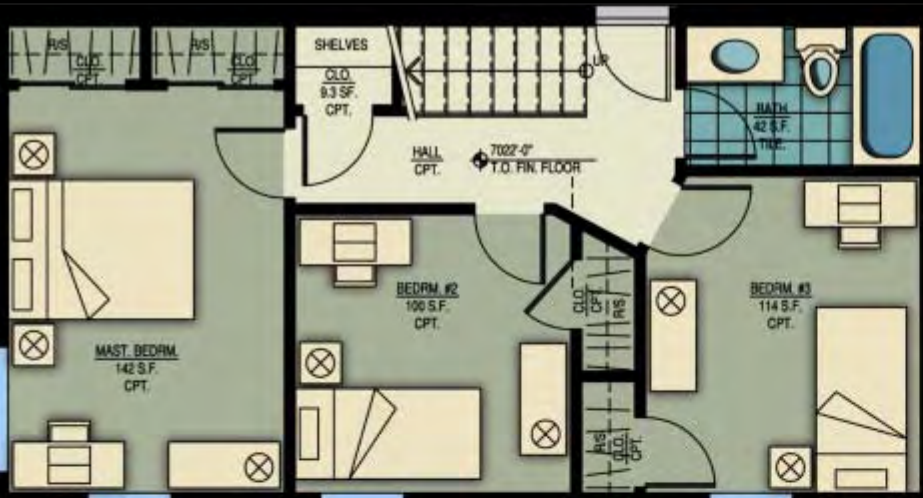


# Habitat Entry #1

Submitted by:

Jeff von Breitenfeld, AIA

Eric Scott, PA





# Habitat Entry #2

Submitted by:

Michael Brendle, FAIA

Carl Hole, AIA

Eric Watson, Assoc. AIA

living room -173  
dining/kitchen -170  
master bedroom -120  
bathroom -60  
bedrooms -80  
half bathroom -40  
office -70  
parking: 2 cars



# FLOORPLANS



# HABITAT for HUMANITY

*designed to create a home and sense of place, the architecture embraces the difficulties and contradictions of the site, program, and environmental conditions*



# Habitat Entry #3

Submitted by:

Molly Blakley, AIA

Alan Ford, AIA

Kathy Ford, AIA

Matt Weaver, Assoc. AIA

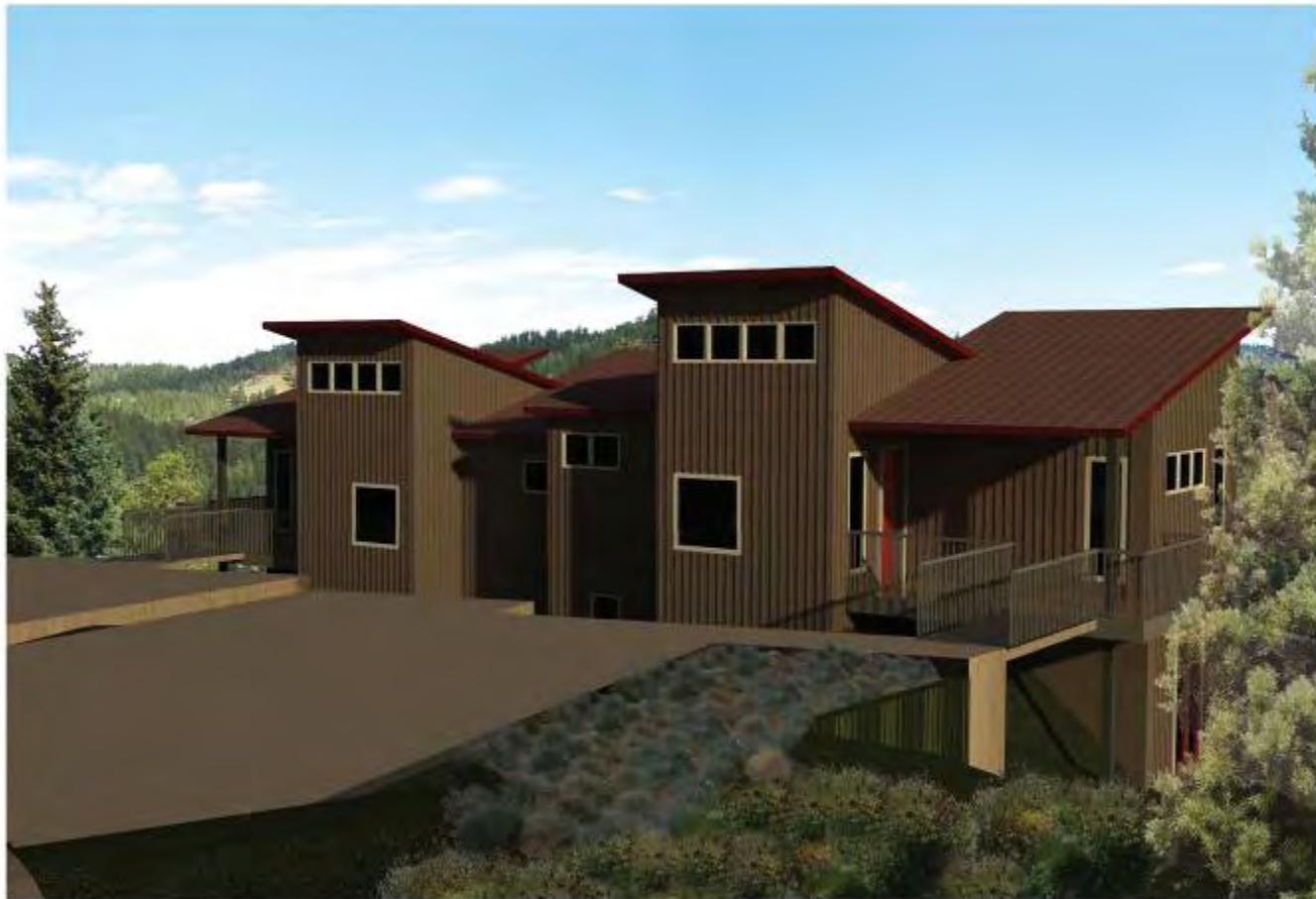
1 ENTRY	(21 SF)	5 POWDER ROOM	(32 SF)
2 LIVING ROOM	(169 SF)	WITH LAUNDRY	
3 DINING ROOM	(125 SF)	6 ADAPTABLE MULTI-FUNCTION	
4 KITCHEN	(103 SF)	BUILT-IN	
		ENTRY FLOOR	605 SF
		TOTAL	1210 SF



# FLEXPLEX

AIA Denver AIA Colorado CAD-I  
 Blue Spruce Habitat for Humanity  
 Habitat for Humanity of Colorado

Entry Floor Plan  
 Design Build Competition 2011



**FLEXPLEX**

AIA Denver AIA Colorado CAD-1  
Blue Spruce Habitat for Humanity  
Habitat for Humanity of Colorado

Exterior View

Design Build Competition 2011

# Habitat Entry #4

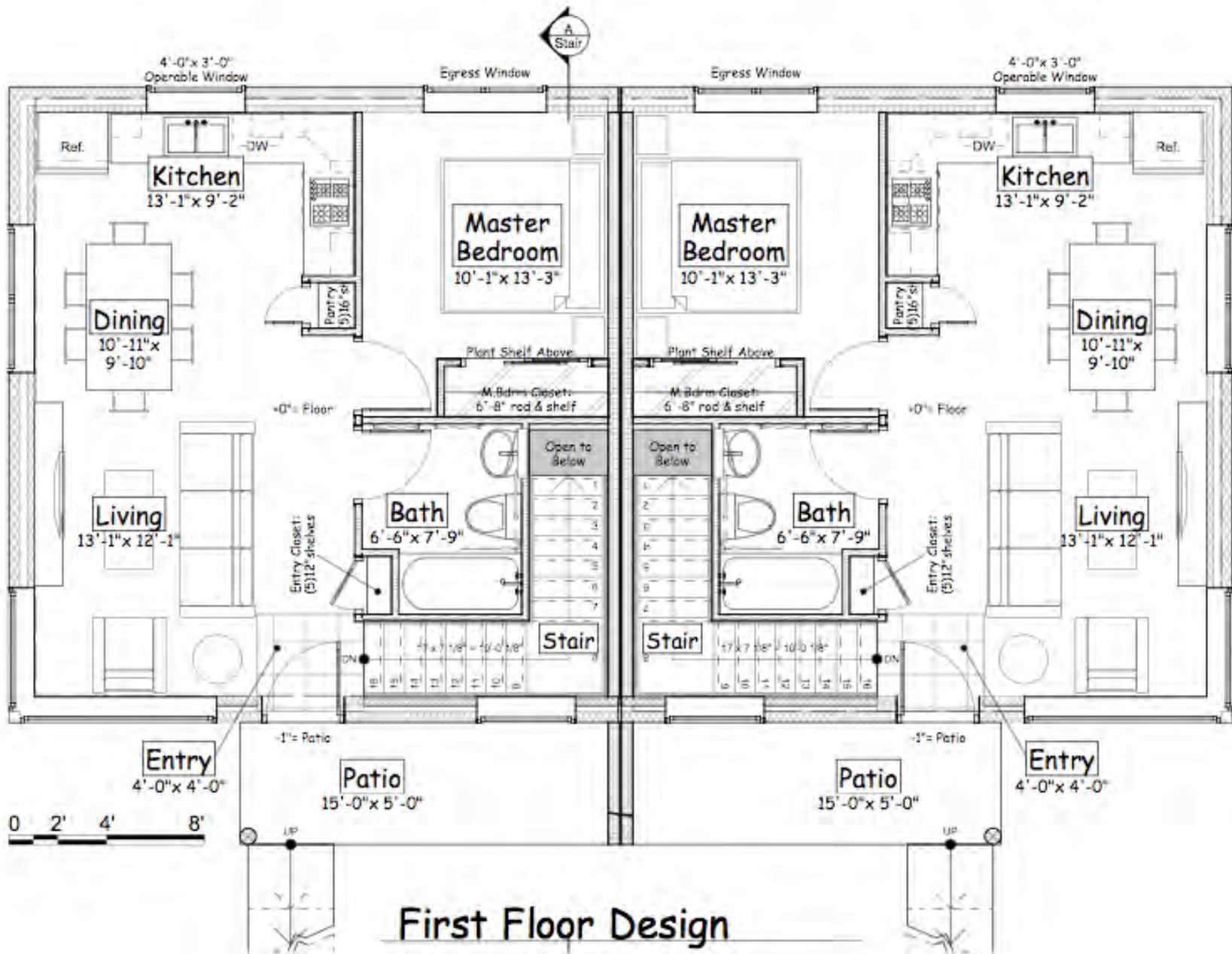
Submitted by:

Paul Adams, AIA

Paul Kriescher

Michael Payne, PA

Michael Scarmack, AIA



# Southwest Axonometric

No Scale

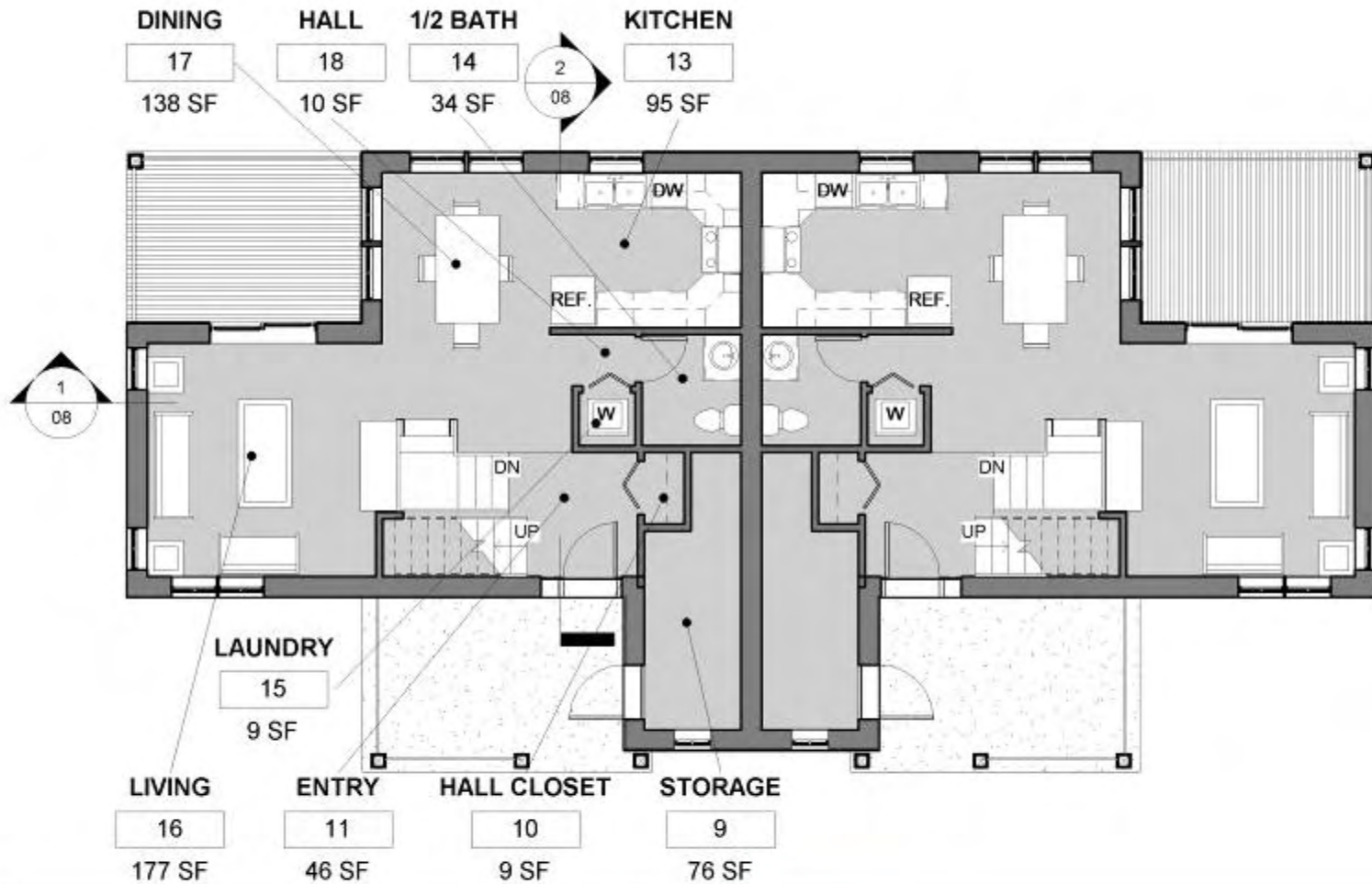


# Habitat Entry #5

Submitted by:

Dwight Eitzen, AIA

Michael Schock, AIA



# Desi3n

utility | durability | beauty

[www.des3n.com](http://www.des3n.com)

Lower Level

06



**Design**3n

utility | durability | beauty

[www.des3n.com](http://www.des3n.com)

Kittredge Habitat Home

# Habitat Entry #6

Submitted by:

Nathan Huyler, AIA

Dominic Walbridge, AIA

# ASPECT HOUSE

DOMINIC WALBRIDGE, AIA, LEED AP  
NATE HUYLER, AIA, LEED AP BD + C



## LOWER LEVEL

A - MASTER BEDROOM	155 SF
B - MBR CLOSET	29 SF
C - BEDROOMS	90 & 97 SF
D - BR CLOSETS	10 & 16 SF
E - UTILITY/LAUNDRY	101 SF
F - FULL BATHROOM	55 SF
G - HALL CLOSET	18 SF
H - BACK PORCH	131 SF

## ENTRY LEVEL

I - ENTRY	22 SF
J - DINING ROOM	174 SF
K - KITCHEN	125 SF
L - LIVING ROOM	174 SF
M - SUNSPACE	49 SF
N - HALF BATHROOM	25 SF
O - HALL CLOSET	26 SF
P - FRONT PORCH	79 SF

Statement  
Site Analysis  
Process

Site Plan  
Floor Plans

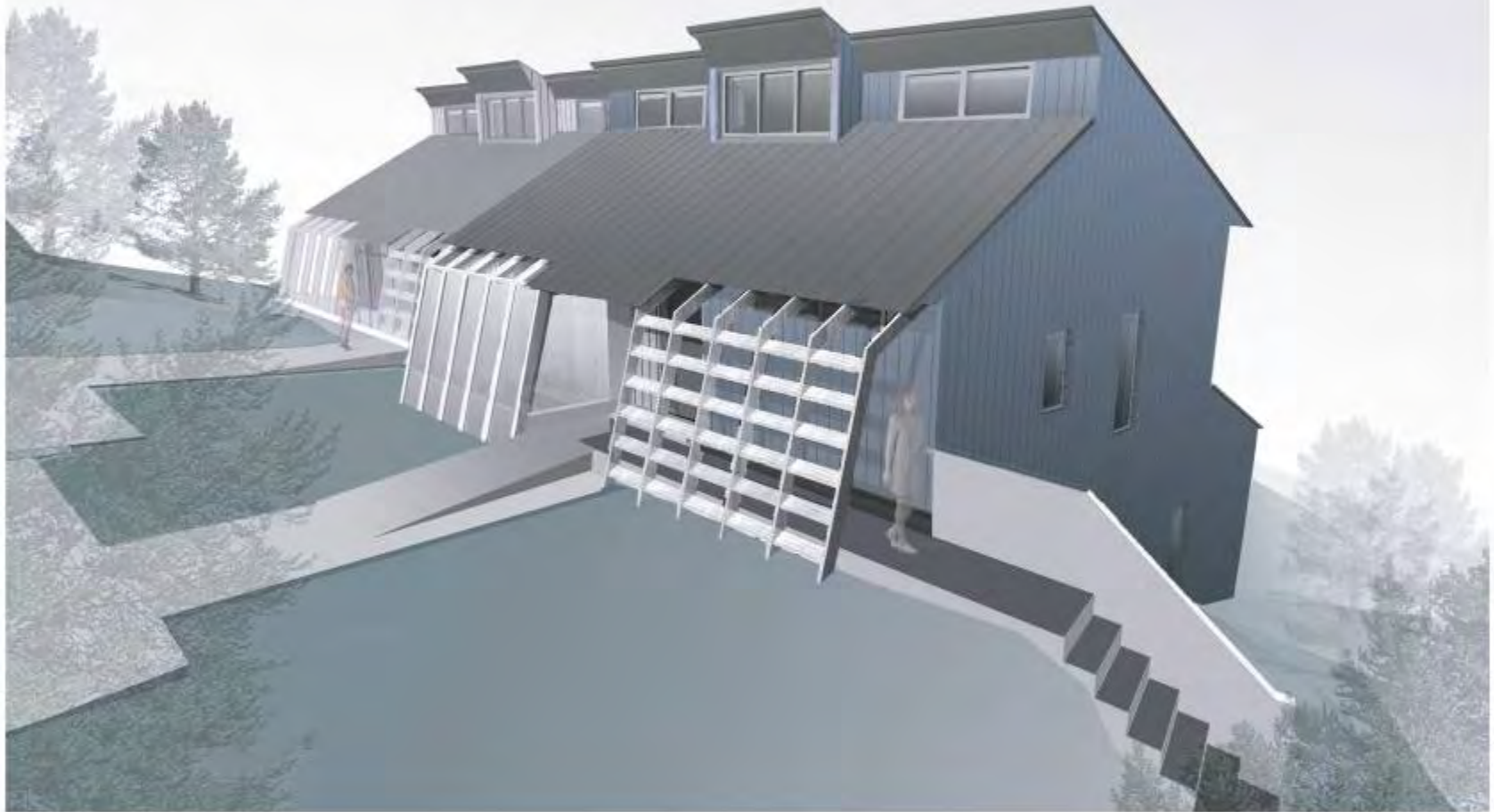
Building Sections  
Building Elevations  
Wall Section

Energy Analysis  
Pricing Information

Exterior Rendering  
Interior Rendering

## ASPECT HOUSE

DOMINIC WALBRIDGE, AIA, LEED AP  
NATE HUYLER, AIA, LEED AP BD + C



EXTERIOR PERSPECTIVE 11

# Habitat Entry #7

Submitted by:

Lisa Fletcher, AIA

Christa Plaza, AIA

Alyssa Tharrett, Assoc. AIA

# MAIN LEVEL FLOOR PLAN

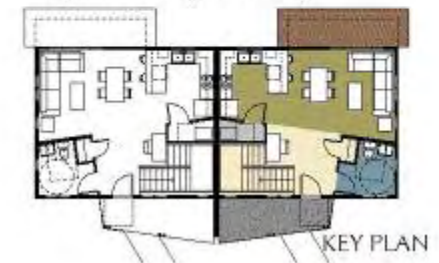
Material: Asphalt Shingles at each roof



Main Level: 580 Square Feet  
 Lower Level: 614 Square Feet  
 Total: 1,194 Square Feet

## KEY DESIGN STRATEGIES

- Visitable units with:
  - Accessible path from parking area
  - Covered porch and flush entrance
  - Accessible bathroom
  - Accessible kitchen
- Exterior footprint on 4' increments for efficient use of materials
- Modular window sizes, placed at 2' increments make for easier framing and save materials
- Standard wall heights with flat ceilings
- Identical trusses across whole duplex are very economical
- Compact, shallow building footprint holds tight to the hill, minimizing cut and fill
- Open floor plan feels spacious and allows for views throughout
- Open floor plan allows daylight to filter in from other spaces
- Common study/computer area for easy access by all family members
- Windows at porch provide natural light into stairwell and lower level
- Centrally located furnace allows shorter duct runs and greater energy efficiency



# 3D VIEWS

Material: Pervious gravel for visitable sidewalks & parking



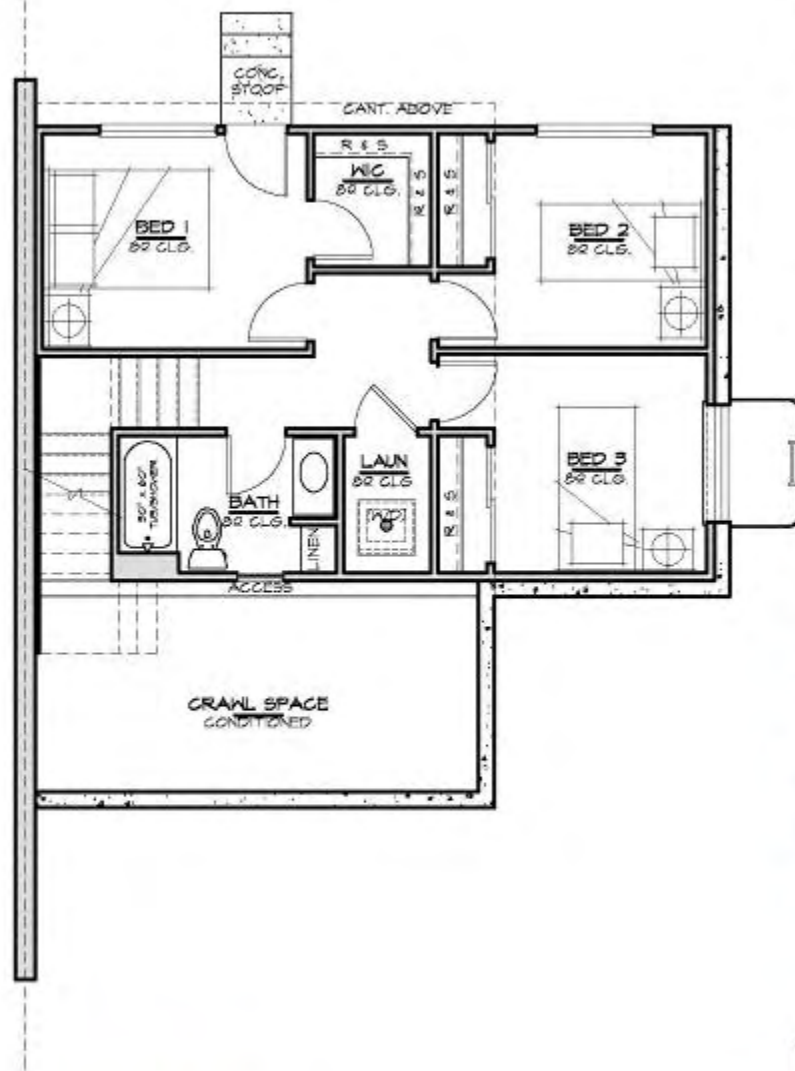
- A** Exterior rendering as viewed from the North West corner.
- B** Interior rendering of the kitchen, dining, and living room with great views of the mountains beyond. This social living place is inviting, open, and spacious compared to other small footprint homes.
- C** Exterior rendering as viewed from eye level at the South East corner.

# Habitat Entry #8

Submitted by:  
Paul Brady, AIA



**Main Floor**  
600 Sq. Ft.



**Upper Floor**  
600 Sq. Ft.





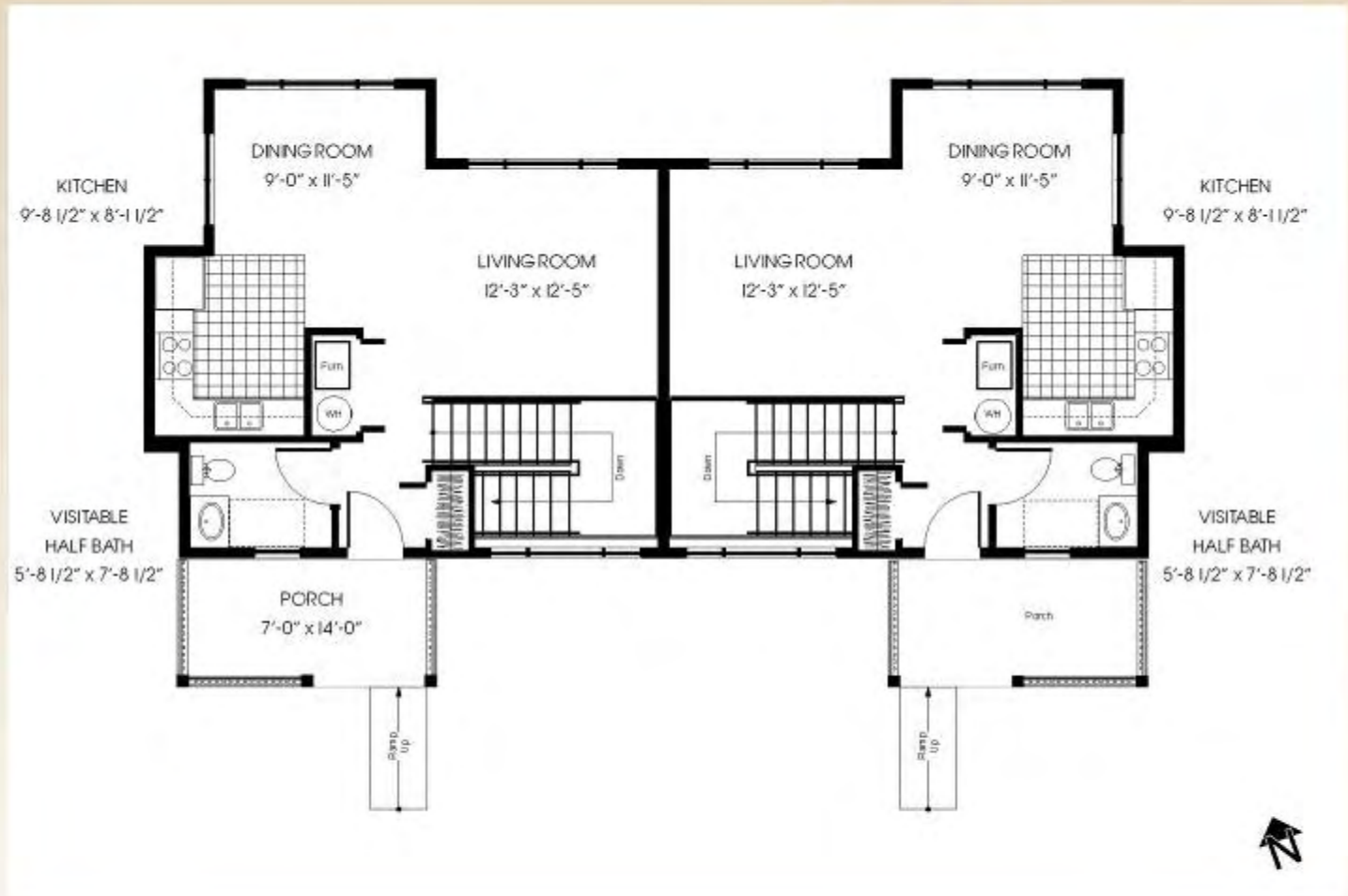
RENDERING | HABITAT FOR HUMANITY

# Habitat Entry #9

Submitted by:

D Manton Reiser, AIA

# AIA Design Build Competition



## LEVEL 02

# AIA Design Build Competition



**NORTHWEST VIEW**

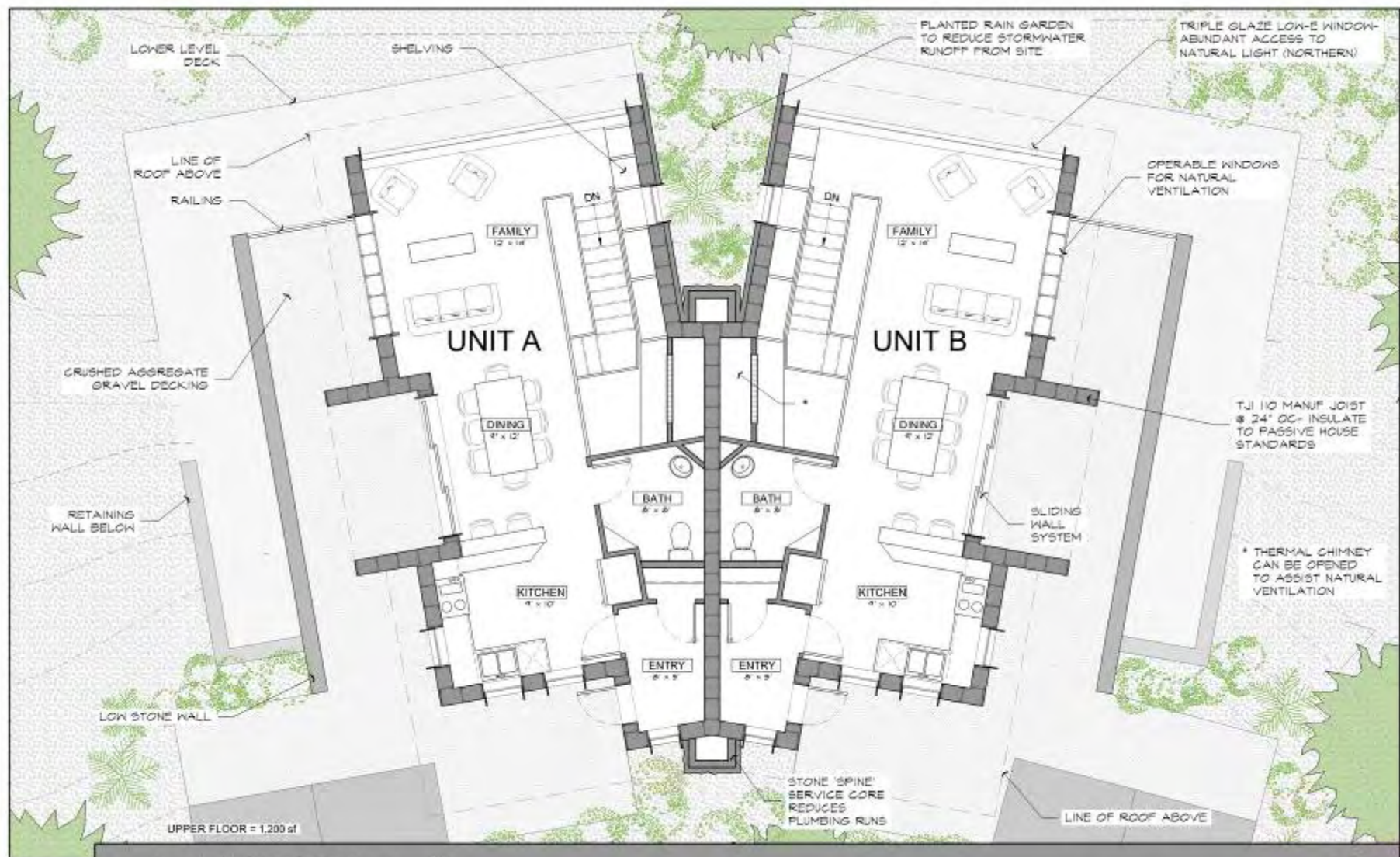
# Habitat Entry

## #10

Submitted by:

Adam Hillhouse, AIA

Brandon Rutledge, Assoc. AIA



.04 UPPER FLOOR PLAN



SCALE: 1/8" = 1'-0"

1.B.D



.10 PERSPECTIVE

60A1 E. NTR

1.B.H

# Habitat Entry

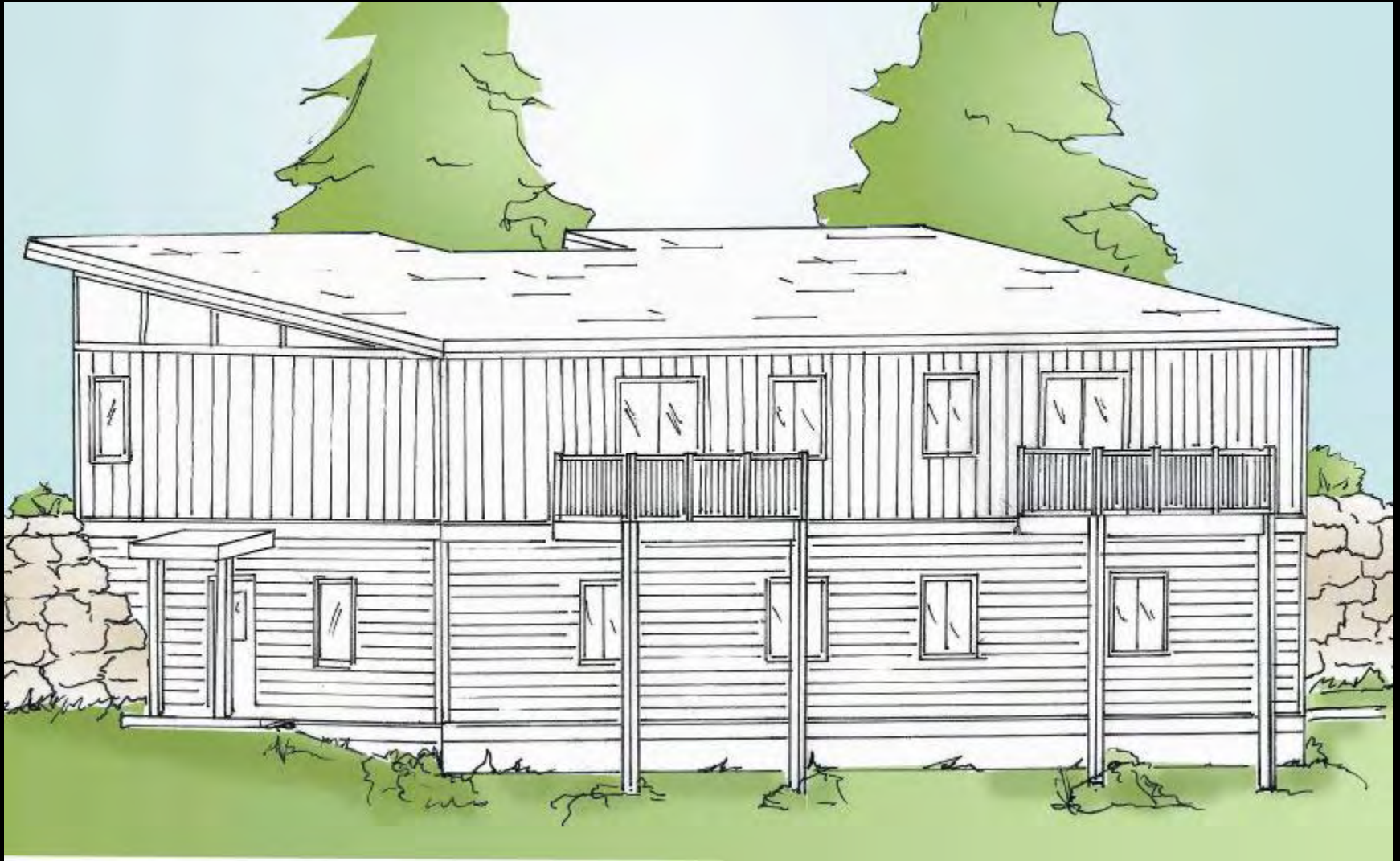
#11

Submitted by:

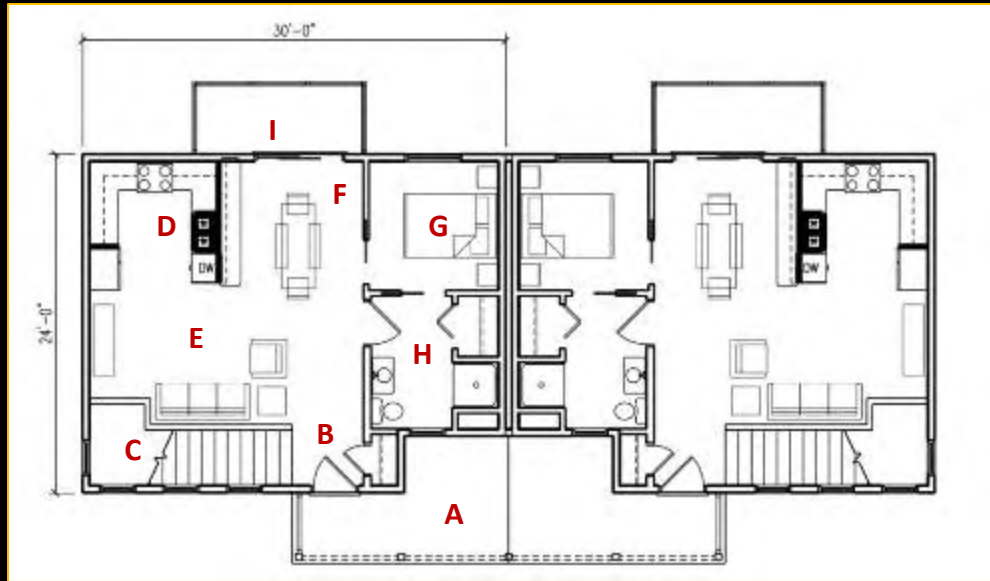
Yvonne Bryant, AIA

Michael Payne, PA

# J. Rendering – Southwest Perspective

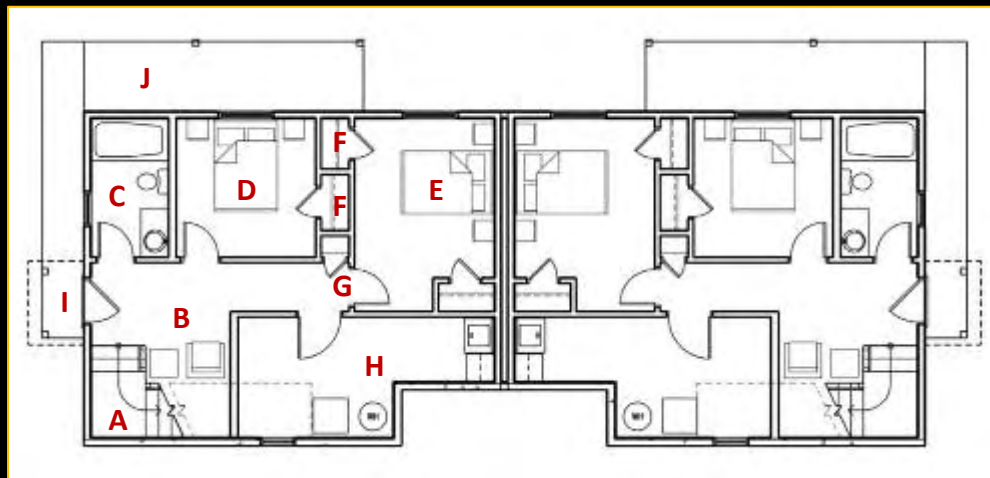


# D. Floor Plans



MAIN LEVEL (Typical): 691 SF finished

- A. Front Porch
- B. Entry with closet
- C. Stairwell
- D. Kitchen
- E. Living Room
- F. Dining Room
- G. Bedroom
- H. Accessible Bathroom with closet
- I. Deck



LOWER LEVEL (Typical): 628 SF finished

- A. Stairwell
- B. Sitting Area
- C. Bathroom
- D. Bedroom
- E. Master Bedroom
- F. Closets
- G. Linen Closet
- H. Utility Room (148 SF)
- I. Side entrance
- J. Future Deck